

Saxophone Practice No.7

・発音、スラーの指定はしていませんがNo.1~6のバリエーションを加えると効果的です

Takayuki Nishimura

C major scale

Musical notation for the C major scale in 4/4 time, spanning measures 1 to 16. The scale is written in treble clef. Measures 1-4 show the ascending scale. Measures 5-8 show the ascending scale with slurs. Measures 9-12 show the descending scale with slurs. Measures 13-16 show the descending scale, ending with a fermata on the final note (C4).

G major scale

Musical notation for the G major scale in 4/4 time, spanning measures 17 to 32. The scale is written in treble clef with a key signature of one sharp (F#). Measures 17-20 show the ascending scale. Measures 21-24 show the ascending scale with slurs. Measures 25-28 show the descending scale with slurs. Measures 29-32 show the descending scale, ending with a fermata on the final note (G4).

F major scale

32

36

40

44

The F major scale is written in treble clef with a key signature of one flat (Bb). It consists of 16 measures. The first four measures (32-35) show the ascending scale. The next four measures (36-39) show the descending scale. The final four measures (40-43) show the ascending scale again. The scale concludes at measure 44 with a fermata on the final note (F), followed by a double bar line and a key signature change to D major (two sharps).

D major scale

48

52

56

60

The D major scale is written in treble clef with a key signature of two sharps (F# and C#). It consists of 16 measures. The first four measures (48-51) show the ascending scale. The next four measures (52-55) show the descending scale. The final four measures (56-59) show the ascending scale again. The scale concludes at measure 60 with a fermata on the final note (D), followed by a double bar line and a key signature change to Bb major (two flats).

Bb major scale

64

68

72

76

Musical notation for the Bb major scale, measures 64-79. The scale is written in treble clef with a key signature of two flats (Bb major). The notation shows the ascending and descending scales with appropriate accidentals. The piece concludes at measure 79 with a double bar line and a key signature change to three sharps (F# major).

A major scale

80

84

88

92

Musical notation for the A major scale, measures 80-95. The scale is written in treble clef with a key signature of three sharps (A major). The notation shows the ascending and descending scales with appropriate accidentals. The piece concludes at measure 95 with a double bar line and a key signature change to two flats (Bb major).

Eb major scale

96

100

104

108

The Eb major scale is written in treble clef with a key signature of two flats (Bb and Eb). It consists of 12 notes: Eb, F, G, Ab, Bb, C, D, Eb, F, G, Ab, Bb. The scale is presented in four measures per line, with a fermata over the final note of the fourth measure in each line. The final measure of the fourth line ends with a double bar line and a key signature change to E major (three sharps).

E major scale

112

116

120

124

The E major scale is written in treble clef with a key signature of three sharps (F#, C#, G#). It consists of 12 notes: E, F#, G, A, B, C#, D, E, F#, G, A, B. The scale is presented in four measures per line, with a fermata over the final note of the fourth measure in each line. The final measure of the fourth line ends with a double bar line and a key signature change to Eb major (two flats).

Ab major scale

128



132



136



140



B major scale

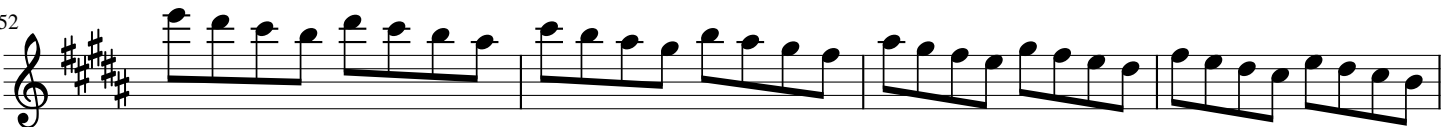
144



148



152



156



Db major scale

160



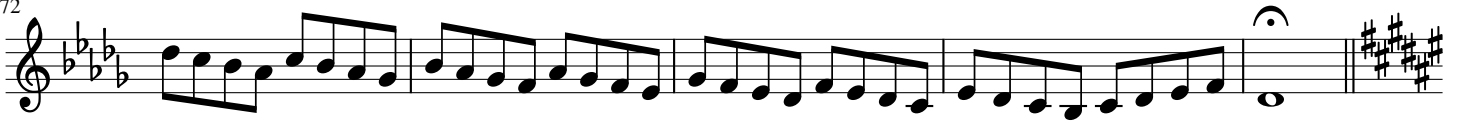
164



168



172



F# major scale

177



181



185



189

